

IIFT Entrance Test

November 24, 2013



The paper was **MODERATE** as compared to some of the previous years' papers. The question paper had **128 questions** divided into four sections to be solved in a time span of **120 minutes**.

Bird's Eye View

Total no. of questions-128

Total time-120 minutes

Sectional breakup and marking scheme – as mentioned in the table given below.

Negative marking–1/3rd of the allotted marks

Number of options– 4

Medium of marking the answer–Pencil

Expected cut-off – **51-53 marks**

Detailed Analysis

S. No.	Section	Sub Section	No. of questions	Marks per question	Total marks	Ideal Time	Ideal no. of attempts
1	General Awareness	None	28	0.5	14	10 mins	18+
2	Quantitative Ability	None	25	1	25	30 mins	15+
3	Data Interpretation and Logical Reasoning	Data Interpretation	19	1	19	20 mins	10+
		Logical Reasoning	20	0.75	15	25 mins	15+
4	Reading comprehension and English Usage	Reading Comprehension	16	0.75	12	20 mins	12+
		English Usage	20	0.75	15	15 mins	15+
		Total	128		100	120 mins	85+

General Awareness (GA)

Number of Questions - 28 | Marks per question - 0.5 | Total marks - 14

In this section, questions were related to those under Static and Dynamic GK. The questions were based on books and authors, sports, geography, history, general studies, etc.

This section was of **EASY TO MODERATE** difficulty level.
The estimated cut-off for this section ranges from 5-6.

Quantitative Ability (QA)

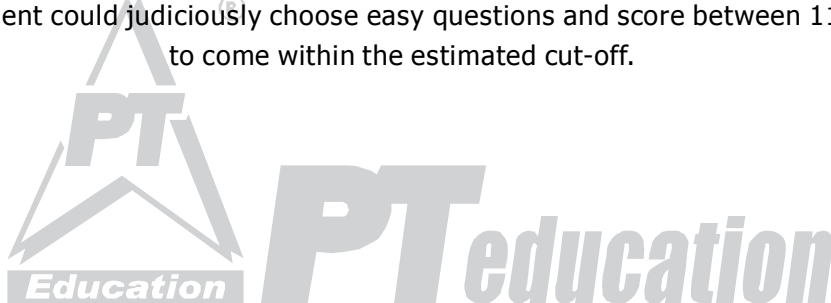
Number of Questions - 25 | Marks per question - 1 | Total marks - 25

This year, a very high weightage was given to Arithmetic, there being 10 questions. There were 5 questions based on P and C and Probability, and they were slightly difficult.

The detailed breakup of this section is as follows -

Topic	Nb. of questions
Numbers	4
Logarithm	2
Equations	2
Ratio, Proportion and Variation	1
Percentage, Profit and Loss, Interest	2
Time and Work	2
Time and Distance	1
Averages, Mixtures and Alligation	2
Geometry- 2D, 3D, Trigonometry	3
P and C, Probability	6
Total	25

Overall, it was an **MODERATE** section.
A student could judiciously choose easy questions and score between 11-13 to come within the estimated cut-off.



Data Interpretation (DI) and Logical Reasoning (LR)

This section was divided into two sub-sections DI and LR

DI

Number of Questions - 19 | Marks per question - 1 | Total marks - 19

The questions were based on tables, bar & line graphs.

The detailed breakup of this sub-section is as follows -

Set	Description	No. of questions
1	Bar and Line Graph	4
2	Table	5
3	Table	5
4	Table	5
	Total	19

Overall, it was a **MODERATE TO TOUGH** sub-section.

A student could score between 6-7 to come within the estimated cut-off.

LR

Number of Questions - 20 | Marks per question - 0.75 | Total marks - 15

The questions were based on conventional areas like coding- decoding, series, input-output analysis, seating arrangements, etc. and were easily manageable.

The detailed breakup of this sub-section is as follows -

Topic	No. of questions
Series	3
Coding and Decoding	3
Data Arrangement	10
Binary Operations	1
Clocks & Calendar	1
Critical Reasoning	2
Total	20

Overall it was a **EASY** sub-section.

A student could score between 12-14 to come within the estimated cut-off.

Reading Comprehension (RC) and English Usage (EU)
This section was divided into two sub-sections RC and EU

EU

Number of Questions - 20 | Marks per question - 0.75 | Total marks - 15

The detailed breakup of this sub-section is as follows -

Topic	No. of questions
Vocab	10
Spellings	2
Fill in the blanks	2
Grammar	3
Para Formation	2
Figurative Language	1
Total	20

This sub-section can be considered as a **MODERATE TO TOUGH** one.

An ideal score will be 8, to come within the estimated cut-off.

RC

Number of Questions - 16 | Marks per question - 0.75 | Total marks - 12

This section had 4 RC passages. The questions were direct and the best approach would have been to read the questions before reading the passage.

The detailed breakup of this sub-section is as follows -

Topic	No. of questions	No. of words
Madoff's Trespasses	4	800
Mustard Ketchup	4	1000
Capitalism	4	1200
Brazil's Economy	4	1200
Total	16	

This sub-section was **MODERATE**.

A score of 8 in this section will be considered good to come within the estimated cut-off.

Expected Cut-off

51-53 marks

Best wishes for the tests ahead !