

IIFT Entrance Test

November 25, 2012



The only significant change in IIFT 2012 Admission Test was related to sectional cut offs being mentioned in instructions, which was not there in the last two years. The paper was easy as compared to some of the previous years' papers. The question paper had 128 questions divided into 4 sections to be solved in a time span of 120 minutes.

Bird's Eye View

Total no. of questions-128

Total time-120 minutes

Sectional breakup and marking scheme – as mentioned in the table given below.

Negative marking–1/3rd of the allotted marks

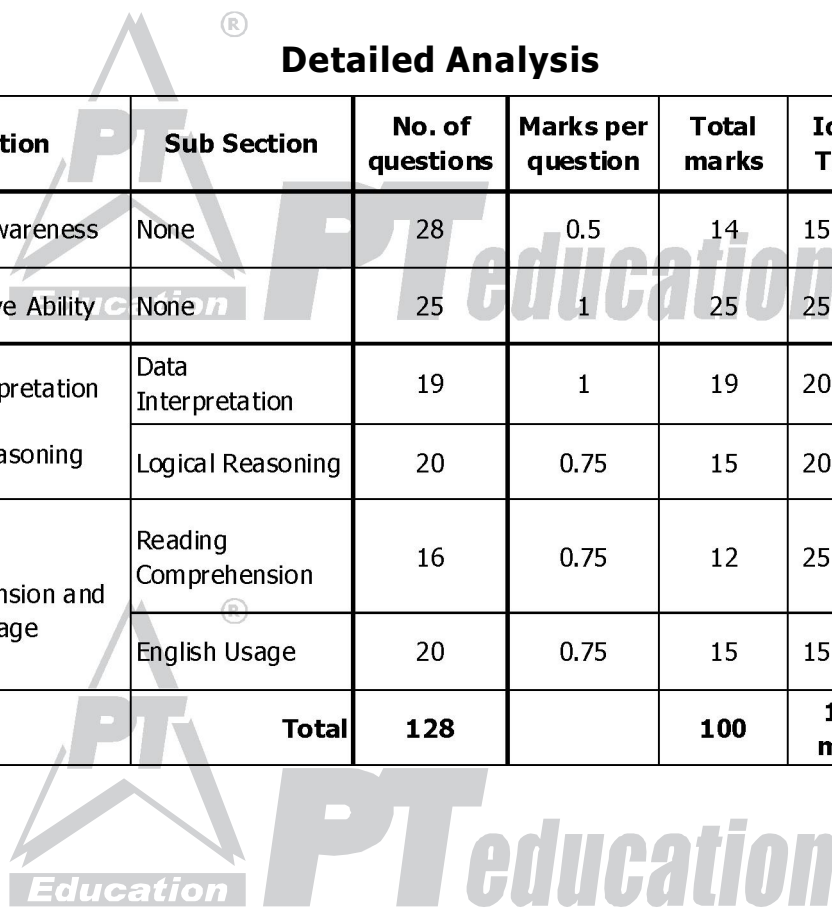
Number of options– 4

Medium of marking the answer–Pencil

Expected cut-off – 45-47 marks

Detailed Analysis

S. No.	Section	Sub Section	No. of questions	Marks per question	Total marks	Ideal Time	Ideal no. of attempts
1	General Awareness	None	28	0.5	14	15 mins	18
2	Quantitative Ability	None	25	1	25	25 mins	18
3	Data Interpretation and Logical Reasoning	Data Interpretation	19	1	19	20 mins	10
		Logical Reasoning	20	0.75	15	20 mins	15
4	Reading Comprehension and English Usage	Reading Comprehension	16	0.75	12	25 mins	12
		English Usage	20	0.75	15	15 mins	15
		Total	128		100	120 mins	88



General Awareness (GA)

Number of Questions - 28 | Marks per question - 0.5 | Total marks - 14

In this section, questions were related to those under Static and Dynamic GK. The questions were based on books and authors, sports, geography, history, general studies, etc.

This section was of **EASY TO MODERATE** difficulty level.

The estimated cut-off for this section ranges from 5-6.

Quantitative Ability (QA)

Number of Questions - 25 | Marks per question - 1 | Total marks - 25

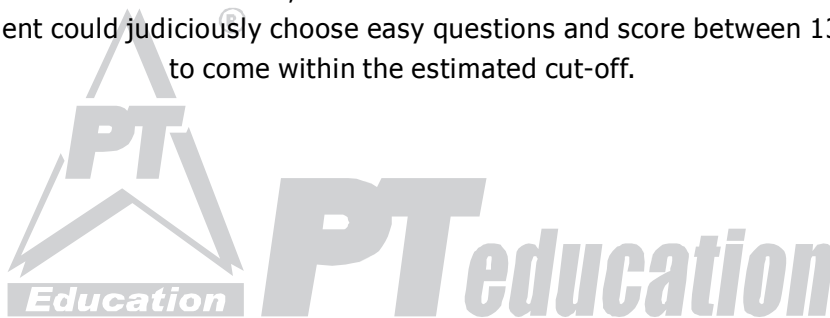
This year, a very high weightage was given to Arithmetic, there being 10 questions. There were 5 questions based on P and C and Probability, and they were slightly difficult.

The detailed breakup of this section is as follows -

Topic	No. of questions
Numbers [®]	4
Logarithm	1
Equations	1
Ratio, Proportion and Variation	3
Percentage, Profit and Loss, Interest	3
Time and Work	1
Time and Distance	1
Averages, Mixtures and Alligation	2
Geometry- 2D, 3D, Trigonometry	4
P and C, Probability	5
Total	25

Overall, it was an **EASY** section.

A student could judiciously choose easy questions and score between 13-15 to come within the estimated cut-off.



Data Interpretation (DI) and Logical Reasoning (LR)

This section was divided into two sub-sections DI and LR

DI

Number of Questions - 19 | Marks per question - 1 | Total marks - 19

The questions were based on tables, bar graphs, line graphs and pie charts.

The detailed breakup of this sub-section is as follows -

Set	Description	No. of questions
1	Bar and Line Graph	5
2	Table	6
3	Table	3
4	Bar Graph	3
5	Pie Chart	2
	Total	19

Overall, it was a **MODERATE** sub-section.

A student could score between 6-7 to come within the estimated cut-off.

LR

Number of Questions - 20 | Marks per question - 0.75 | Total marks - 15

The questions were based on conventional areas like coding- decoding, series, input-output analysis, seating arrangements, etc. and were easily manageable.

The detailed breakup of this sub-section is as follows -

Topic	No. of questions
Ranking	1
Series	3
Coding and Decoding	1
Comparison	2
Syllogism	2
Analogy	1
Data Arrangement	5
Input, Output Analysis	2
Binary Operations	1
Directions	2
Total	20

Overall it was a **MODERATE** sub-section.

A student could score between 7-8 to come within the estimated cut-off.

Reading Comprehension (RC) and English Usage (EU)

This section was divided into two sub-sections RC and EU

EU

Number of Questions - 20 | Marks per question - 0.75 | Total marks - 15

The detailed breakup of this sub-section is as follows -

Topic	No. of questions
Vocab	8
Spellings	2
Fill in the blanks	2
Grammar	4
Para Formation	2
Figurative Language	2
Total	20

This sub-section can be considered as a **MODERATE** one.
An ideal score will be 7, to come within the estimated cut-off.

RC

Number of Questions - 16 | Marks per question - 0.75 | Total marks - 12

This section had 4 RC passages. The questions were direct and the best approach would have been to read the questions before reading the passage.

The detailed breakup of this sub-section is as follows -

Topic	No. of questions	No. of words
Purpose of a business	4	800
Child's narration of his school days	4	1500
KBC	4	1000
Relation between Babur and Humayun	4	1000
Total	16	

This sub-section was **EASY**.
A score of 6 in this section will be considered good to come within the estimated cut-off.

Expected Cut-off

45-47 marks

Best wishes for the tests ahead !